

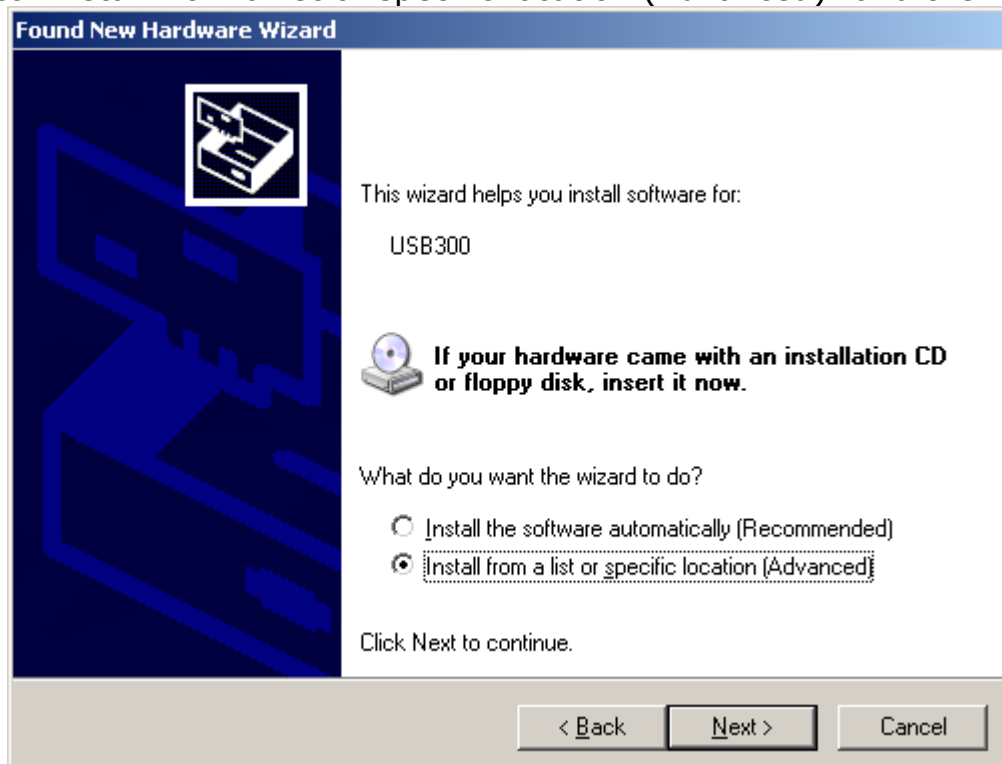
USB-CDC (USB to RS232) Driver Installation

Step 1. Place the disk into the CD-ROM.

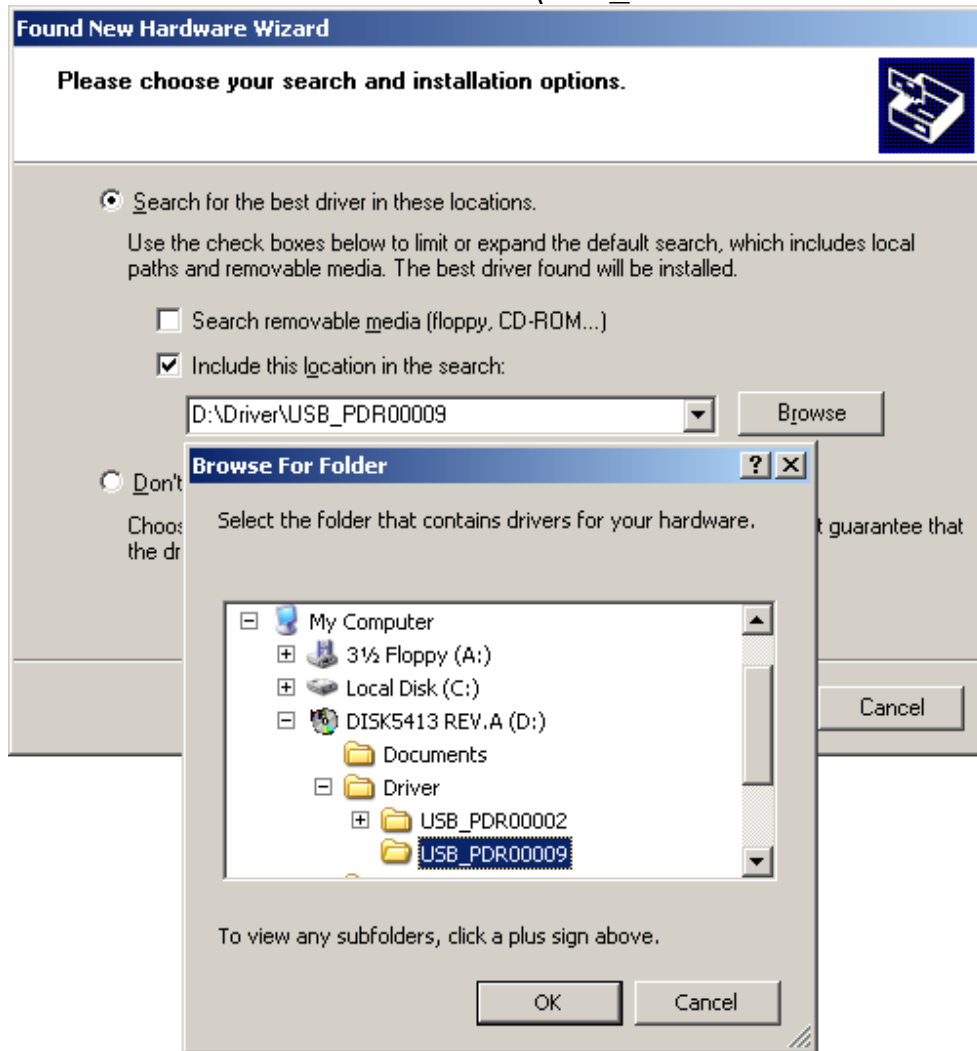
Step 2. Connect the device with your computer. When the "Found New Hardware Wizard" window appears, select "No, not this time".



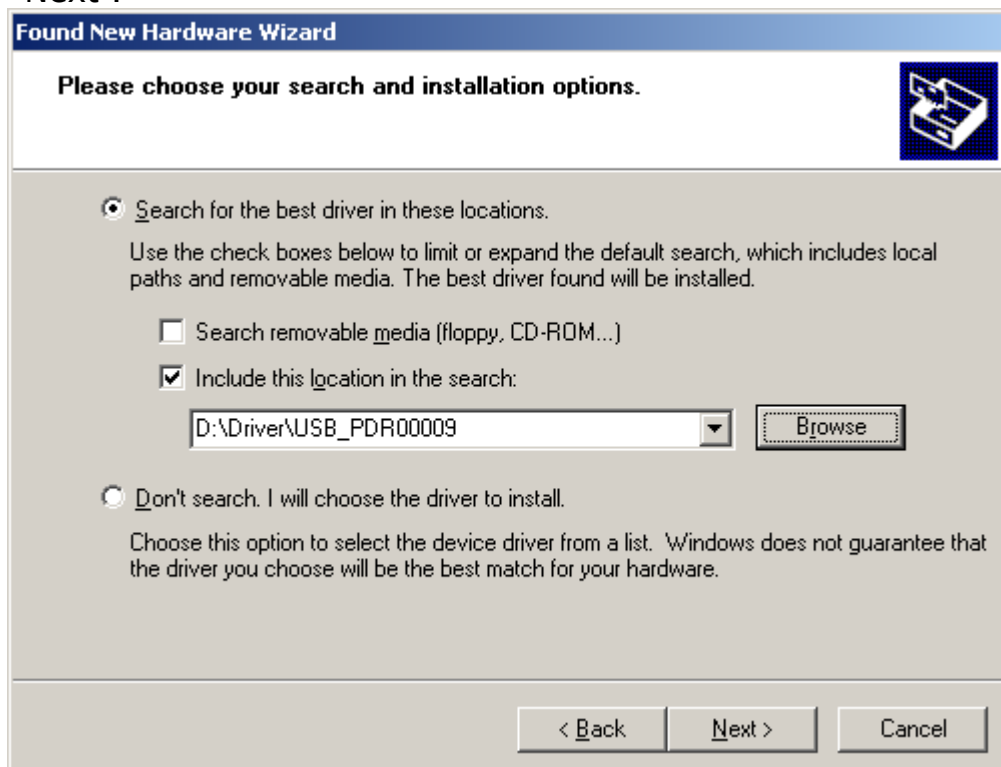
Step 3. Select "Install from a list or specific location (Advanced)" and then click "Next".



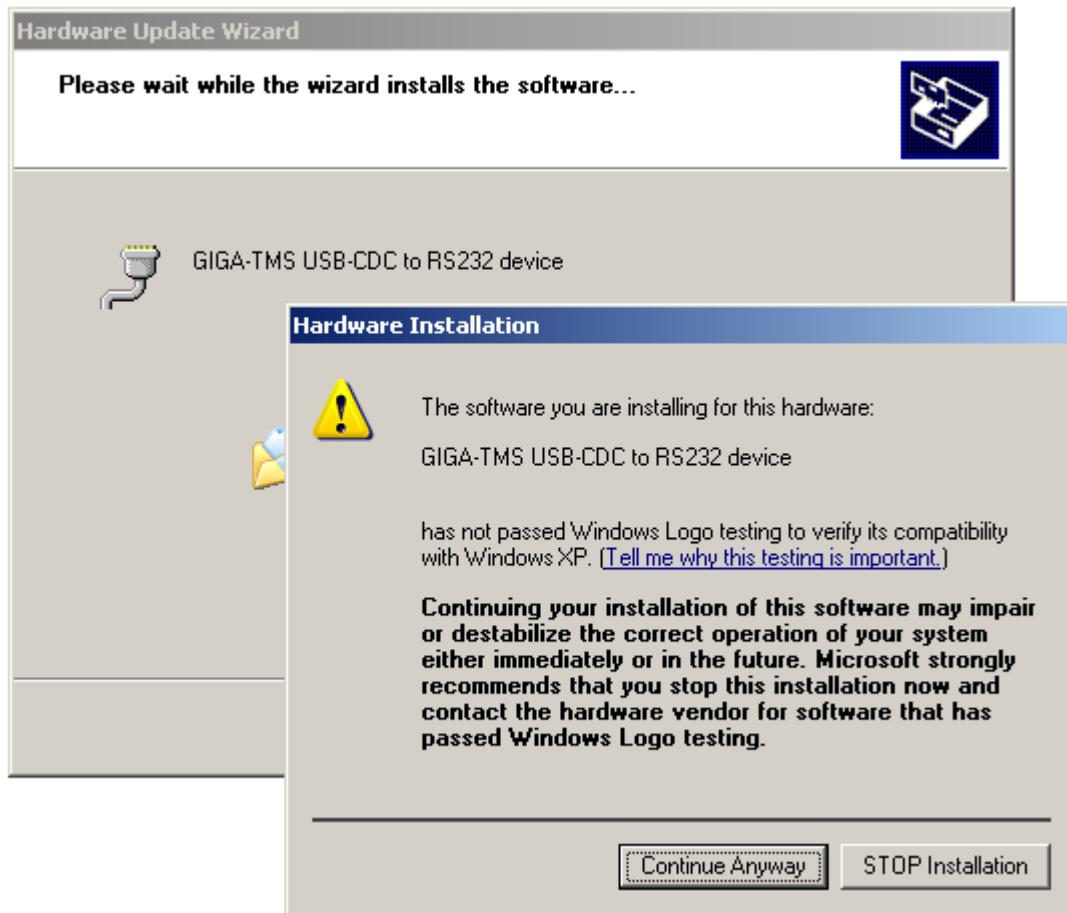
Step 4. Click "Browse" and then select "Driver\USB_PDR00009" under the disk path.



Step 5. Click "Next".



Step 6. If the warning message as below appears, click "Continue Anyway" to continue the installation.



Step 7. Click "Finish" to complete the installation.

